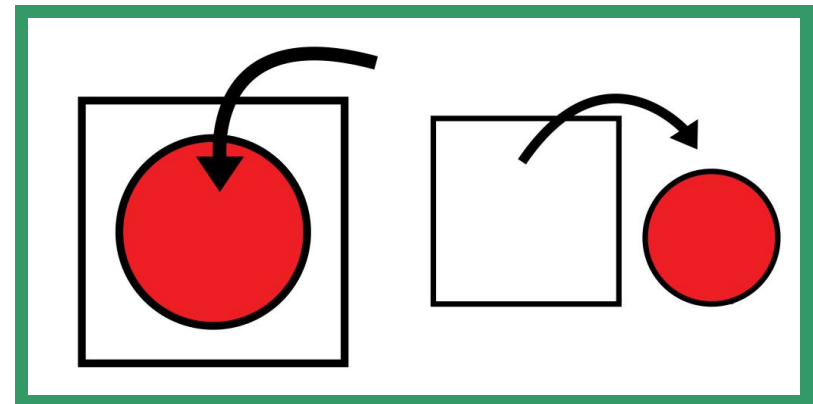
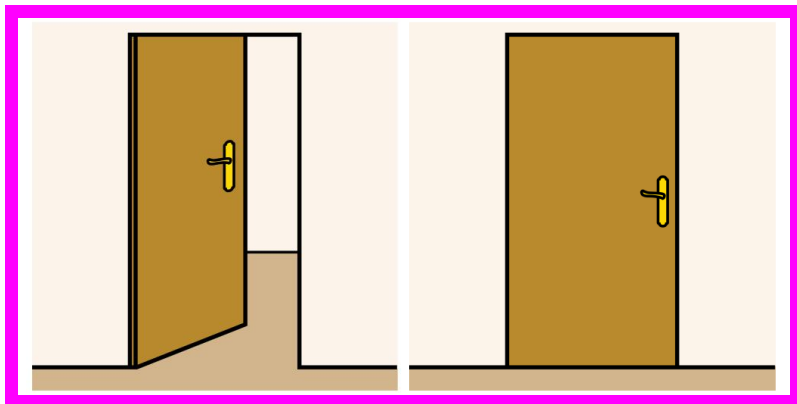
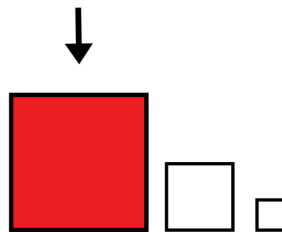
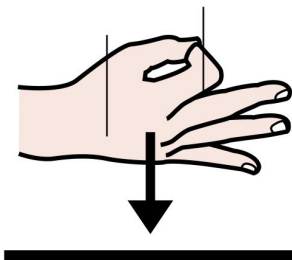
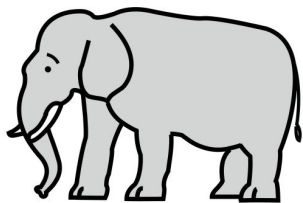


CONTRARIOS 1

Adjetivos y adverbios



EL



EL

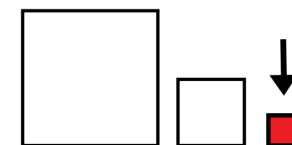
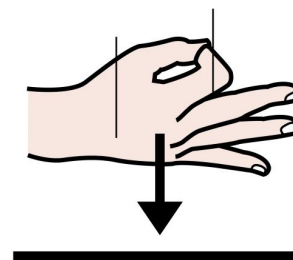
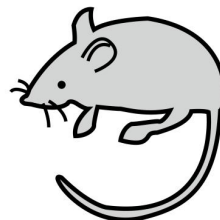
ELEFANTE

ES

GRANDE



EL



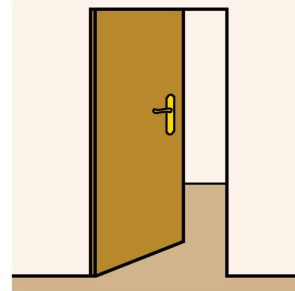
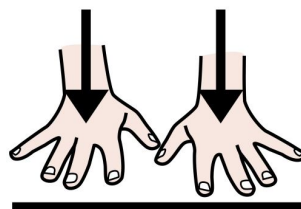
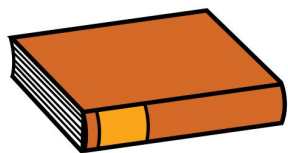
EL

RATÓN

ES

PEQUEÑO

EL

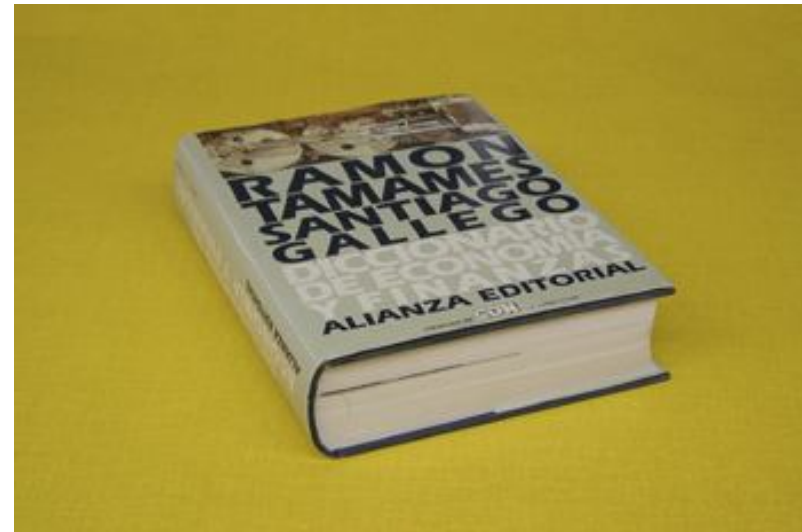
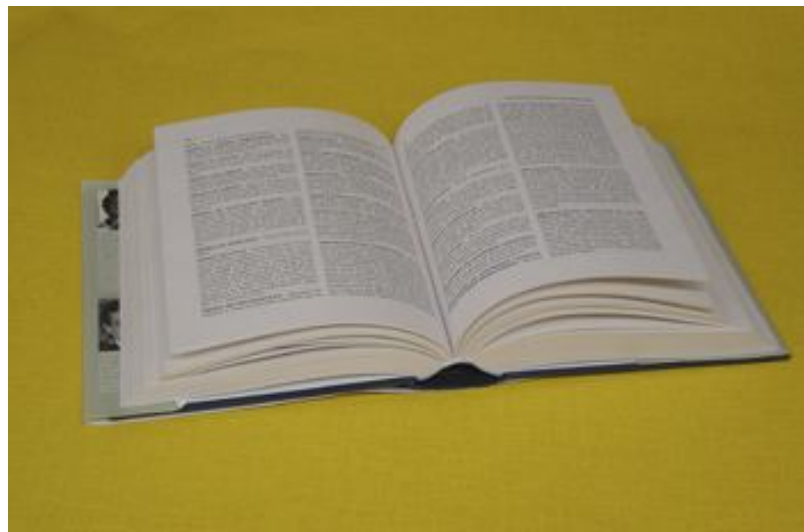


EL

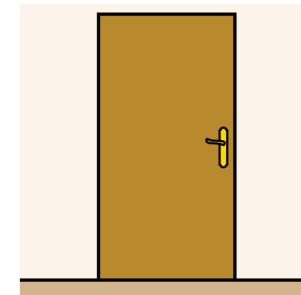
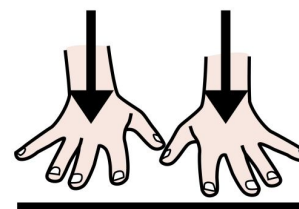
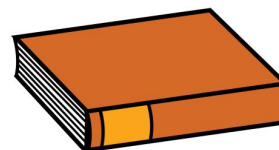
LIBRO

ESTÁ

ABIERTO



EL

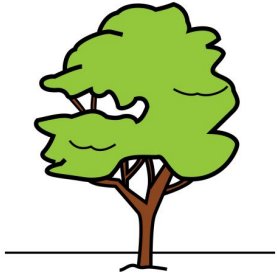
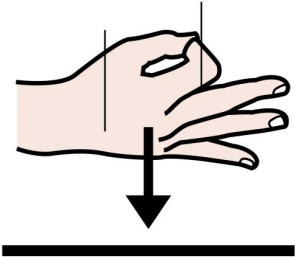
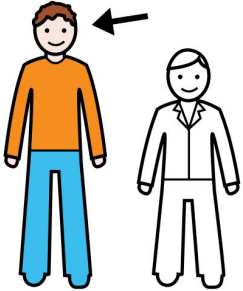


EL

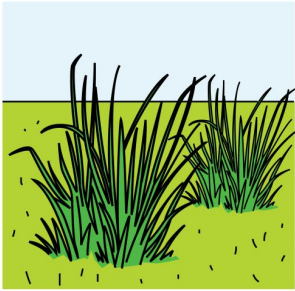
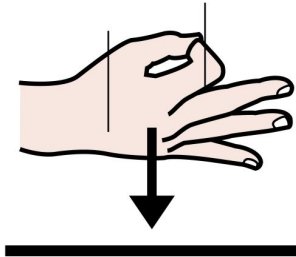
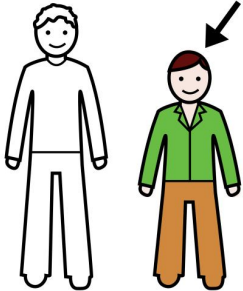
LIBRO

ESTÁ

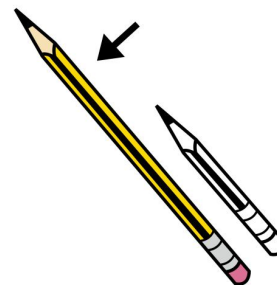
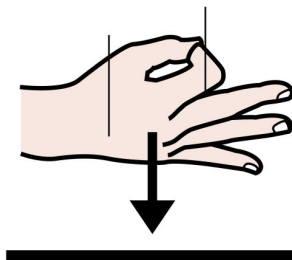
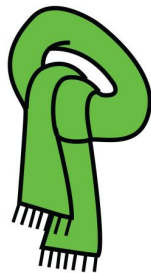
CERRADO

EL			
EL	ÁRBOL	ES	ALTO



LA			
LA	HIERBA	ES	BAJA

LA



LA

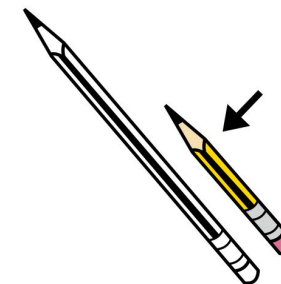
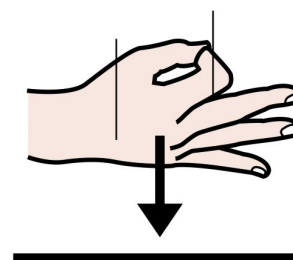
BUFANDA

ES

LARGA



EL



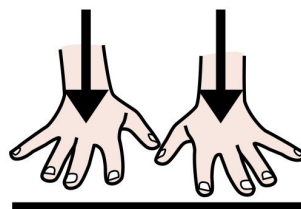
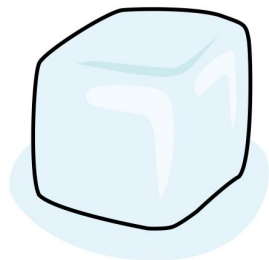
EL

BAÑADOR

ES

CORTO

EL



EL

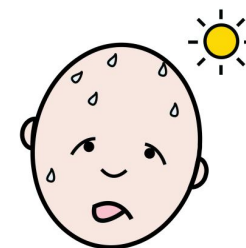
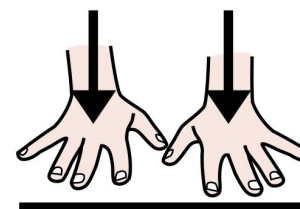
HIELO

ESTÁ

FRÍO



EL


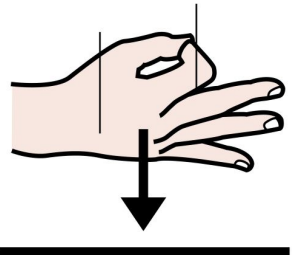
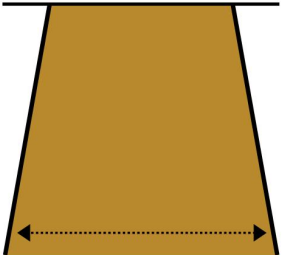


EL

FUEGO

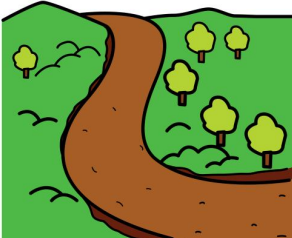
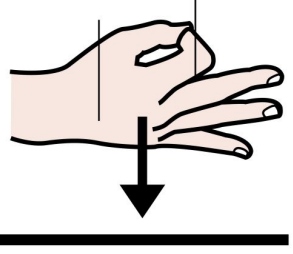
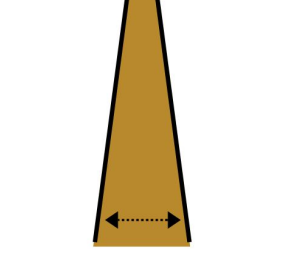
ESTÁ

CALIENTE

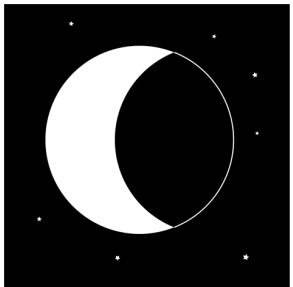
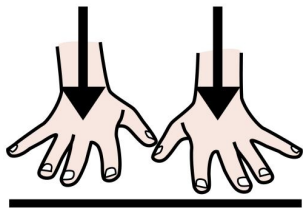
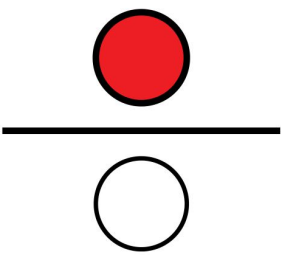
LA   

LA CARRETERA ES ANCHA

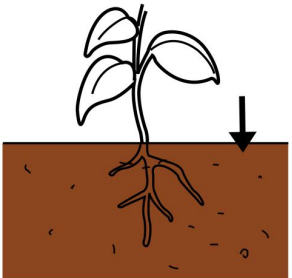
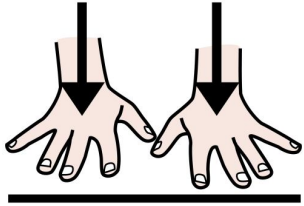
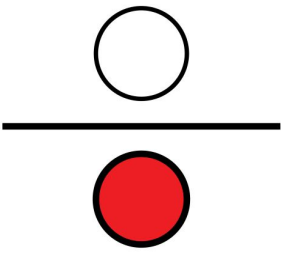


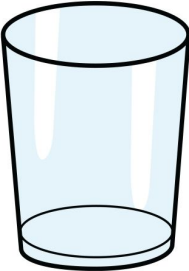
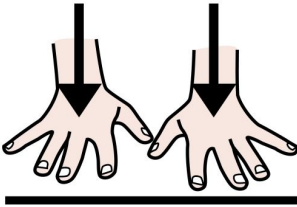
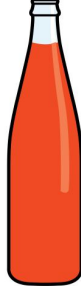
EL   

EL CAMINO ES ESTRECHO

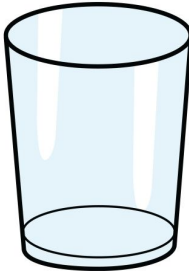
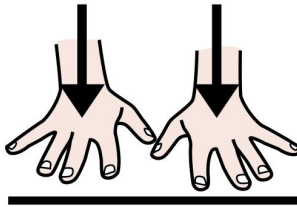

LA			
LA	LUNA	ESTÁ	ARRIBA



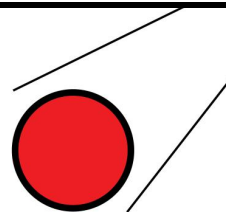
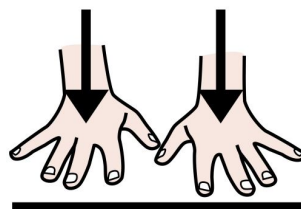
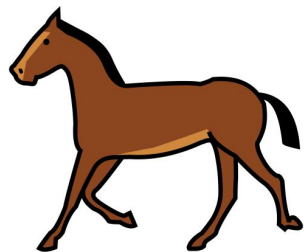
LA			
LA	TIERRA	ESTÁ	ABAJO

EL			
EL	VASO	ESTÁ	LLENO



EL			
EL	VASO	ESTÁ	VACÍO

EL



EL

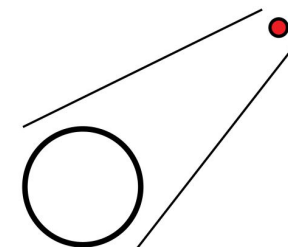
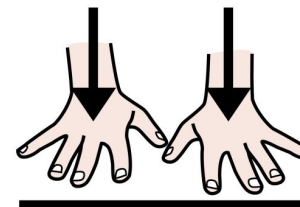
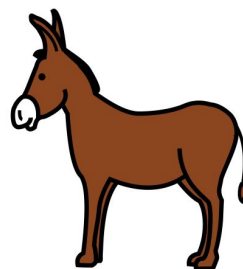
CABALLO

ESTÁ

CERCA



EL

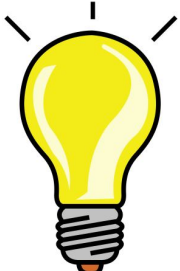
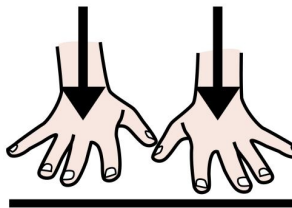



EL

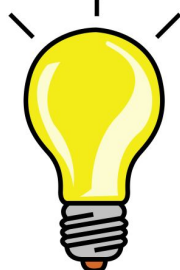
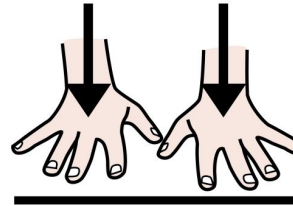
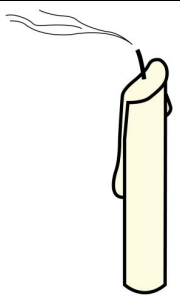
BURRO

ESTÁ

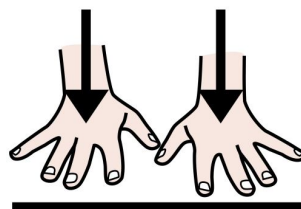
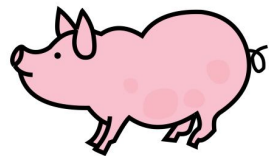
LEJOS

LA			
LA	BOMBILLA	ESTÁ	ENCENDIDA



LA			
LA	BOMBILLA	ESTÁ	APAGADA

EL



EL

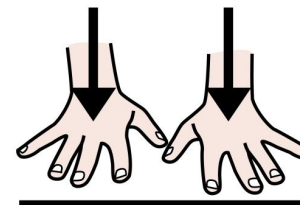
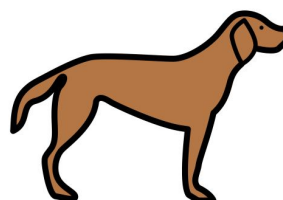
CERDO

ESTÁ

GORDO



LA



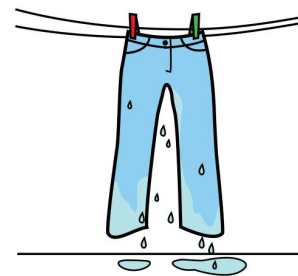
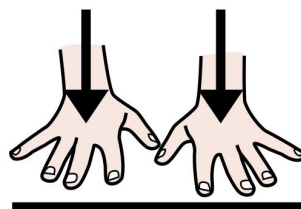
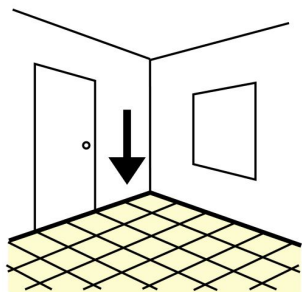
EL

PERRO

ESTÁ

DELGADO

EL



EL

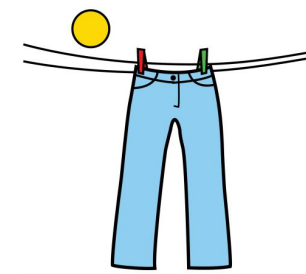
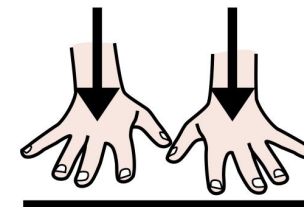
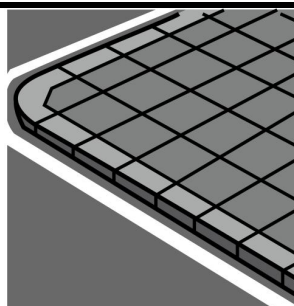
SUELO

ESTÁ

MOJADO



LA

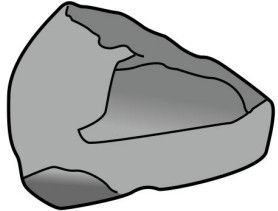
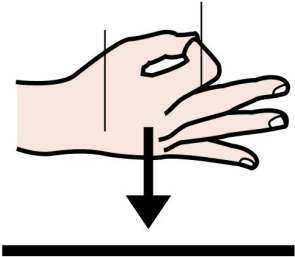
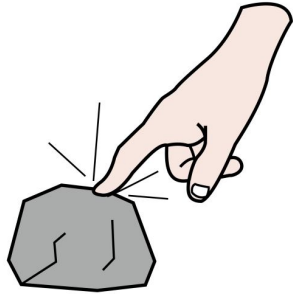


LA

ACERA

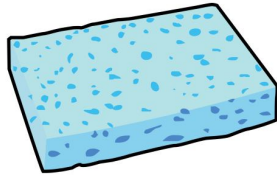
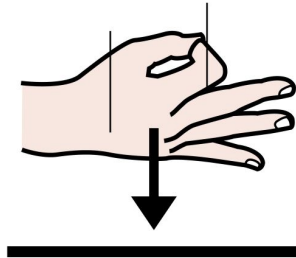
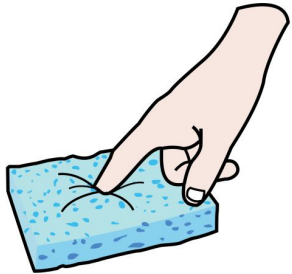
ESTÁ

SECA

LA   

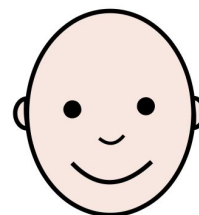
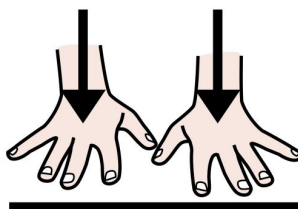
LA PIEDRA ES DURA



LA   

LA ESPONJA ES BLANDA

LA



LA

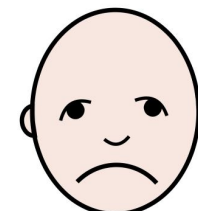
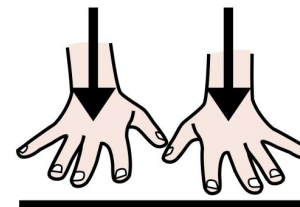
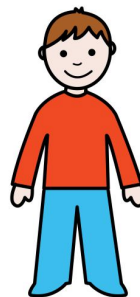
MAMÁ

ESTÁ

ALEGRE



EL



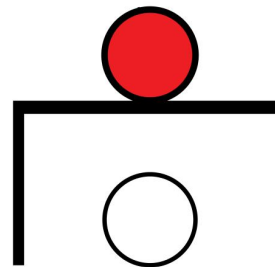
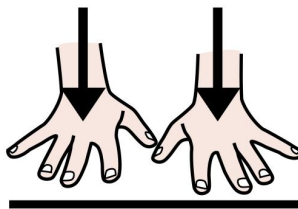
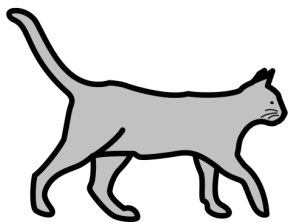
EL

NIÑO

ESTÁ

TRISTE

EL



EL

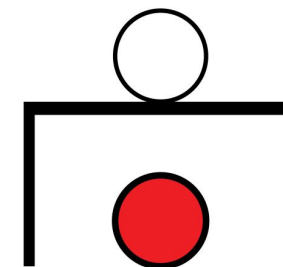
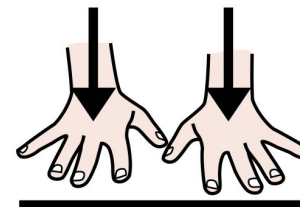
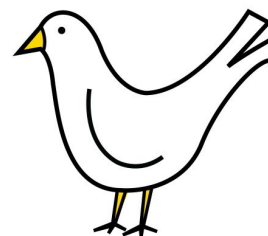
GATO

ESTÁ

ENCIMA



LA



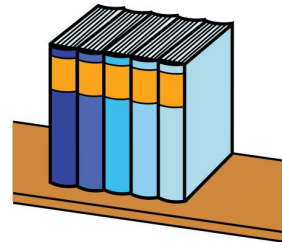
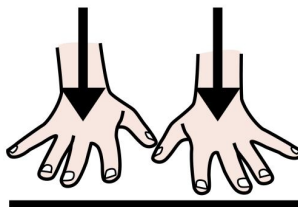
LA

PALOMA

ESTÁ

DEBAJO

LA



LA

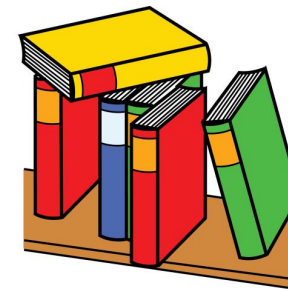
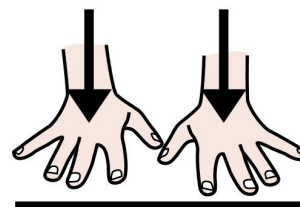
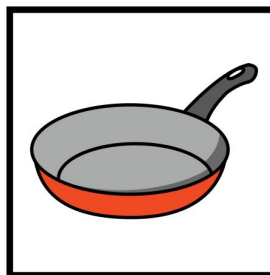
LIBRERÍA

ESTÁ

ORDENADA



LA



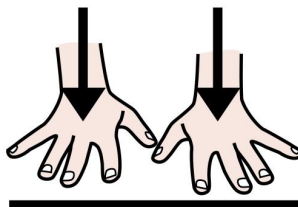
LA

COCINA

ESTÁ

DESORDENADA

LA



LA

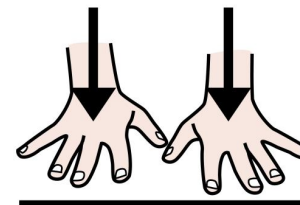
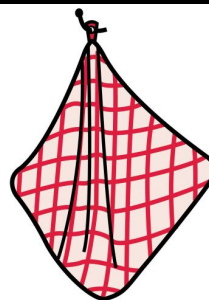
CAMISA

ESTÁ

LIMPIA



EL



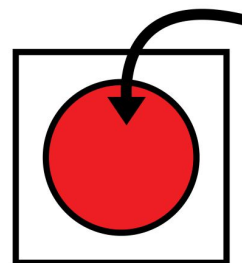
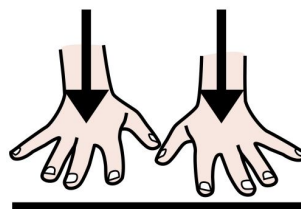
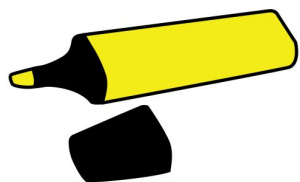
EL

PAÑO

ESTÁ

SUCIO

EL



EL

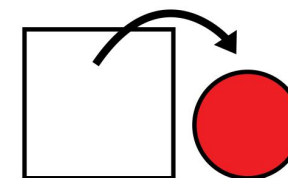
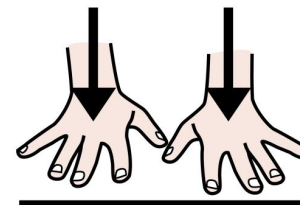
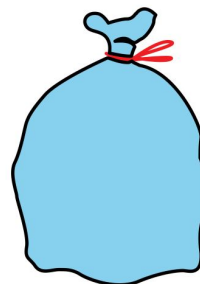
ROTULADOR

ESTÁ

DENTRO



LA


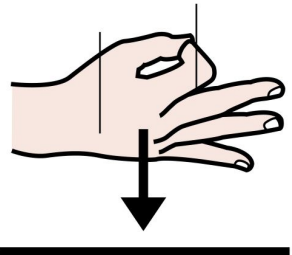
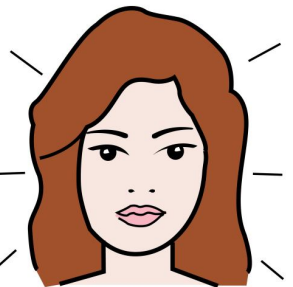


LA


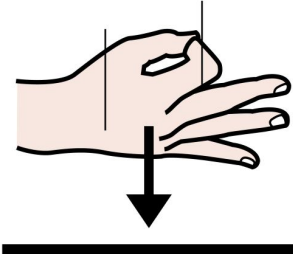
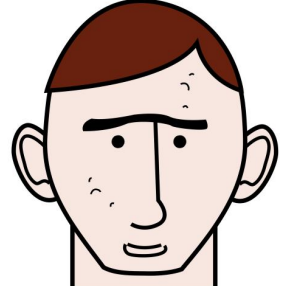
BASURA

ESTÁ

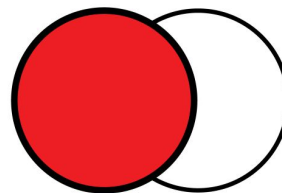
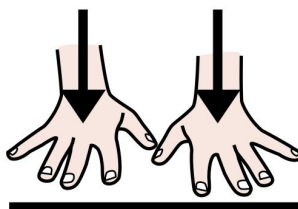
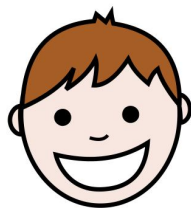
FUERA

LA			
LA	MUJER	ES	GUAPA



LA			
LA	CARETA	ES	FEA

EL



EL

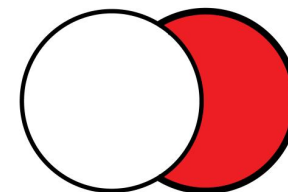
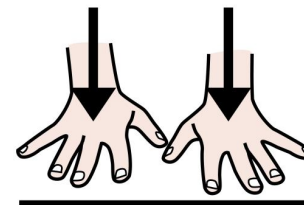
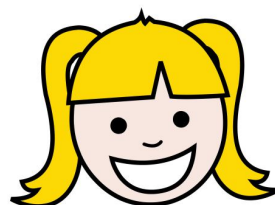
NIÑO

ESTÁ

DELANTE



LA



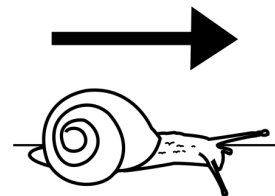
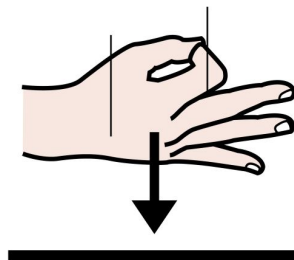
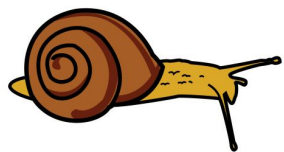
LA

NIÑA

ESTÁ

DETRÁS

EL



EL

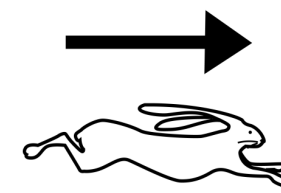
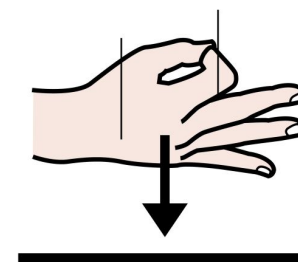
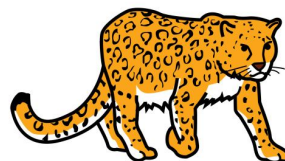
CARACOL

ES

LENTO



EL

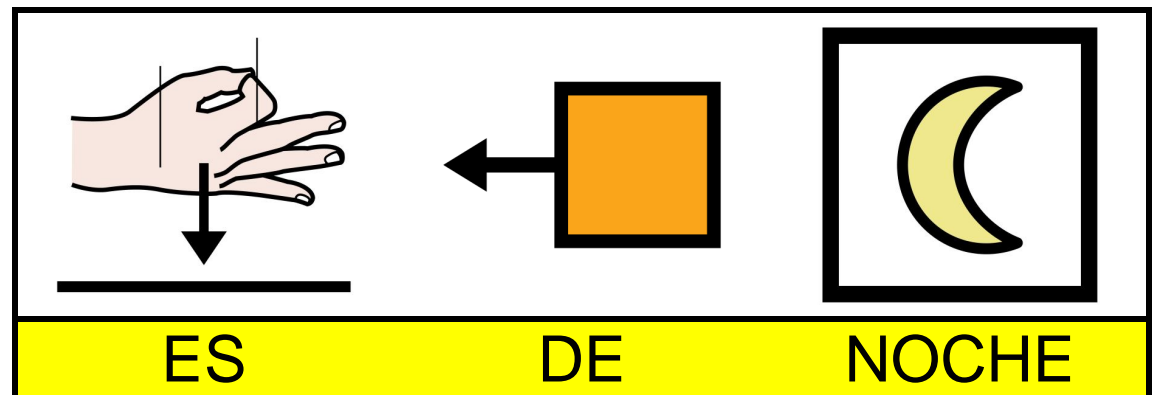
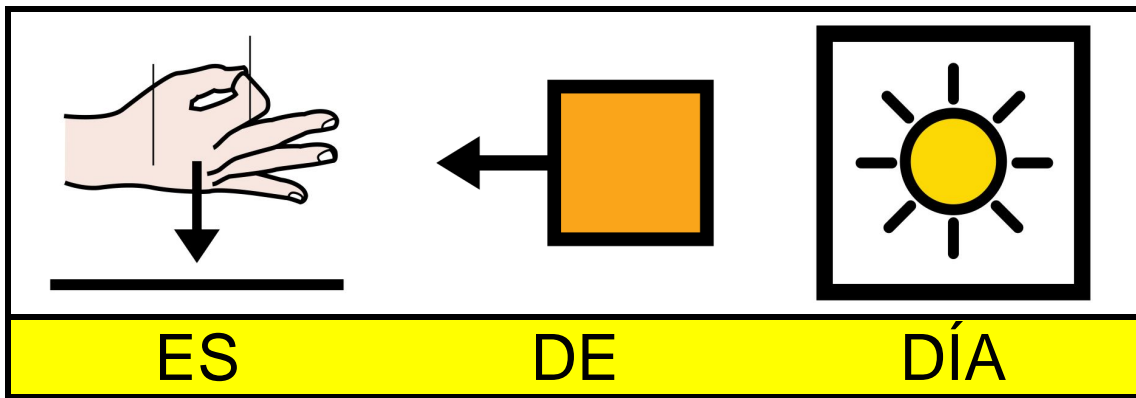


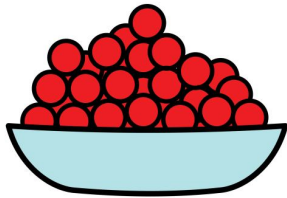
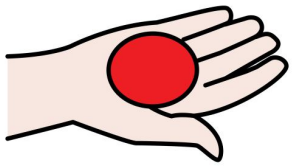
EL

LEOPARDO

ES

RÁPIDO

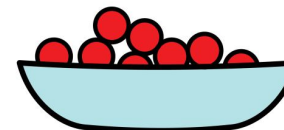
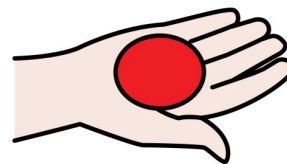




TENGO

MUCHAS

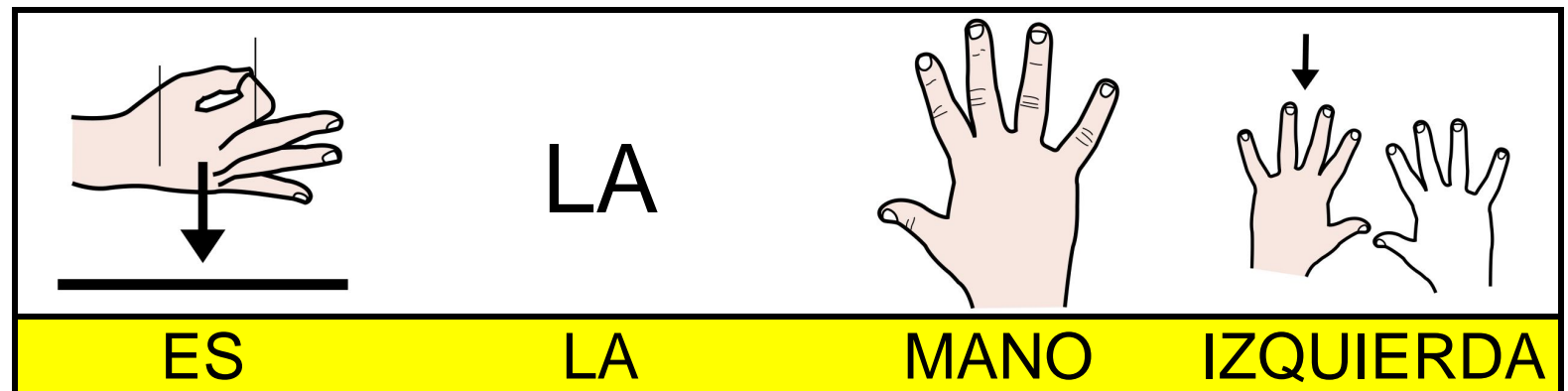
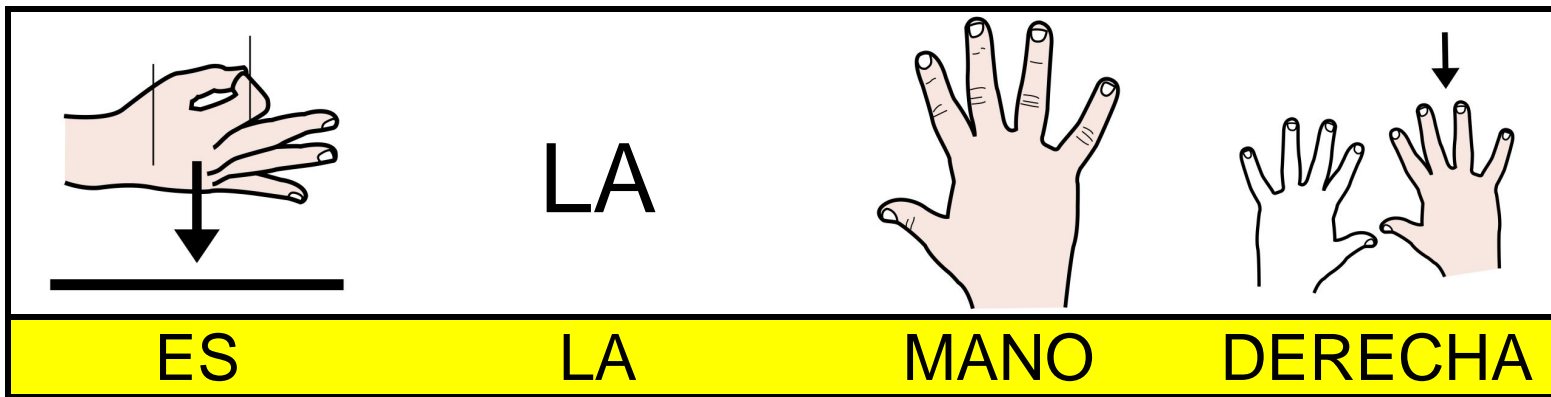
PATATAS

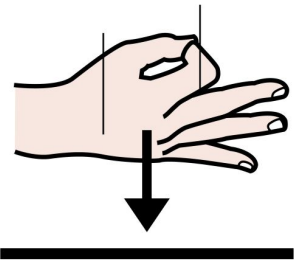


TENGO

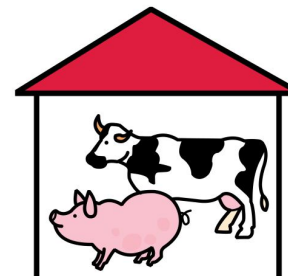
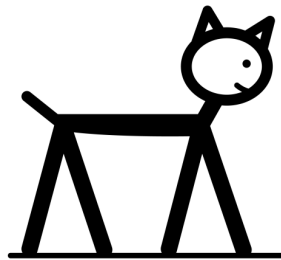
POCAS

FRESAS





UN

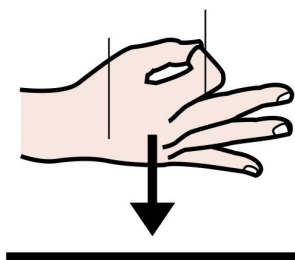


ES

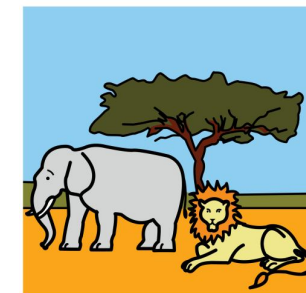
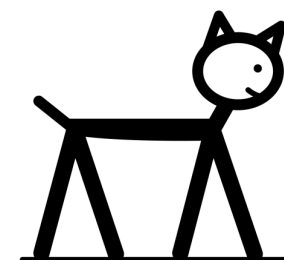
UN

ANIMAL

DOMÉSTICO



LA



ES

UN

ANIMAL

SALVAJE